

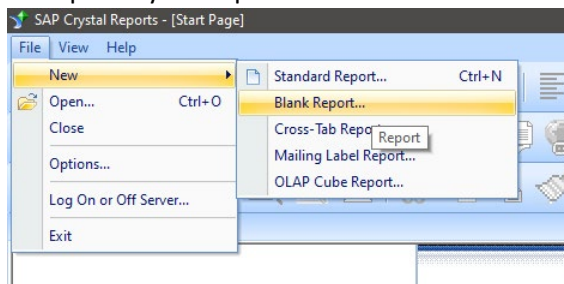
SQL connection

How to connect to the Adventure Works sample data for Webucator class.

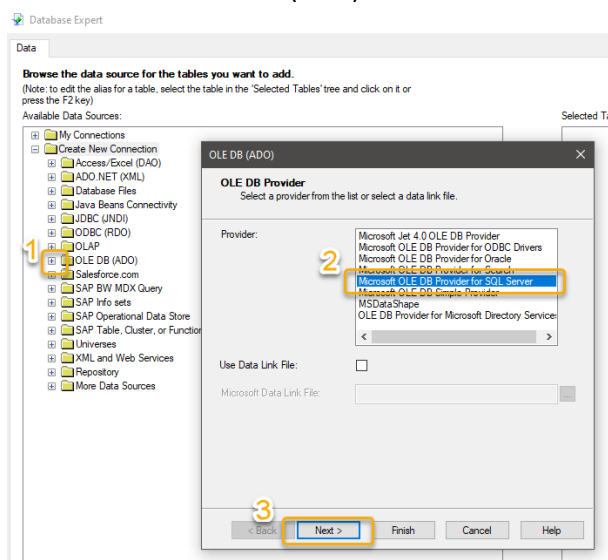
- Connection String: Driver={SQL Server Native Client 11.0};Server=adventureworks.cswlrmup8ri6.us-east-1.rds.amazonaws.com;Database=AdventureWorks1;Uid=admin;Pwd=webucator123!;
- Server: adventureworks.cswlrmup8ri6.us-east-1.rds.amazonaws.com
- Username: admin
- Password: webucator123!
- Database: AdventureWorksAccess
- Provider: OLE DB Provider for SQL Server

Steps:

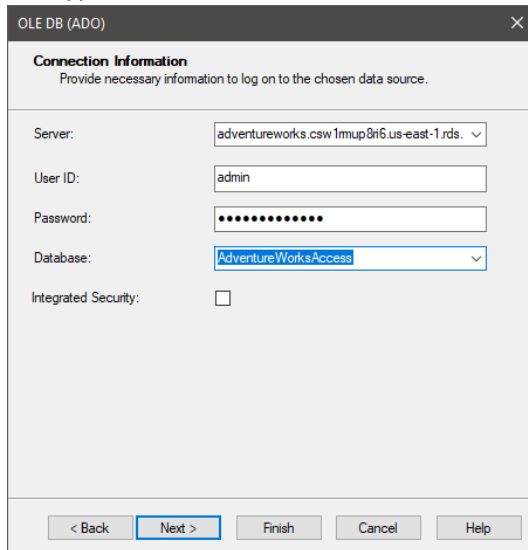
1 – Open Crystal reports and start a new blank report.



2 – Click on the OLE DB (ADO) and choose Microsoft OLE DB Provider for SQL Server. Click Next.



3 – Type in the connection data. Click Next.

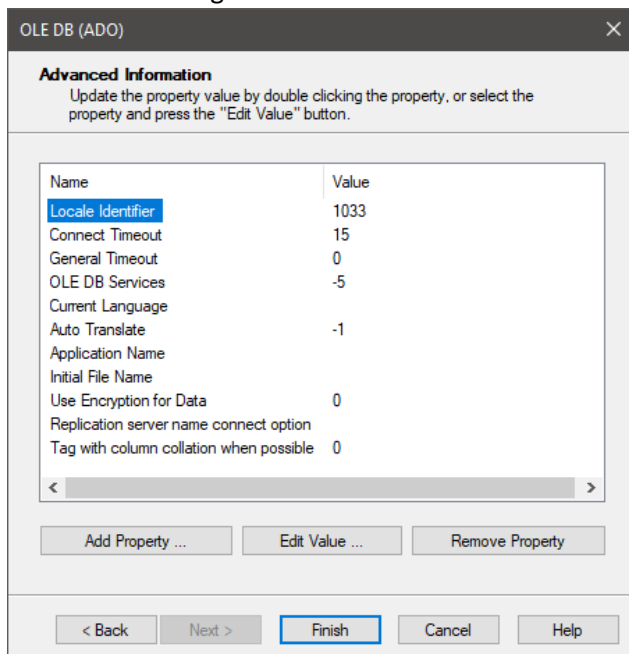


The dialog box is titled "OLE DB (ADO)" and contains a section titled "Connection Information" with the instruction "Provide necessary information to log on to the chosen data source." The fields are as follows:

- Server: adventureworks.csw1mup8n6.us-east-1.rds. (dropdown menu)
- User ID: admin (text box)
- Password: (password box with 10 dots)
- Database: AdventureWorksAccess (dropdown menu)
- Integrated Security: ☐

At the bottom, there are five buttons: "< Back", "Next >" (highlighted with a blue border), "Finish", "Cancel", and "Help".

4 – Review settings and Click Next.

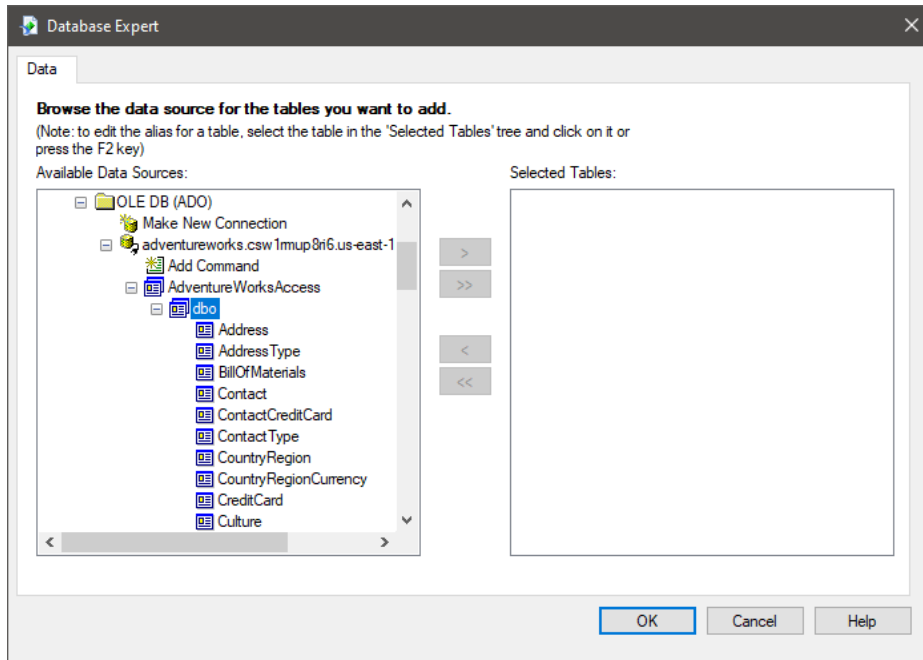


The dialog box is titled "OLE DB (ADO)" and contains a section titled "Advanced Information" with the instruction "Update the property value by double clicking the property, or select the property and press the 'Edit Value' button." Below this is a table with two columns: "Name" and "Value".

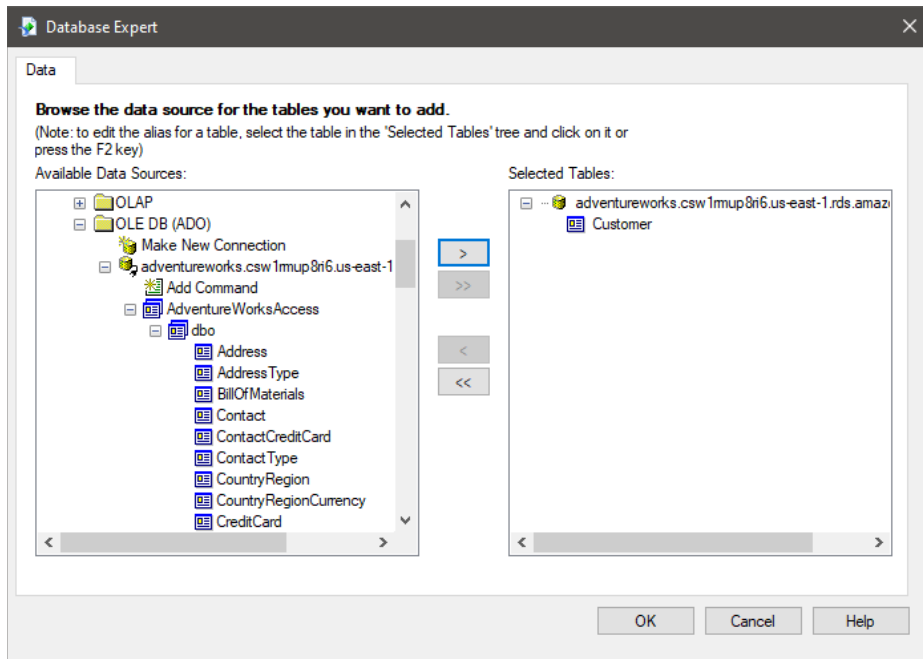
Name	Value
Locale Identifier	1033
Connect Timeout	15
General Timeout	0
OLE DB Services	-5
Current Language	
Auto Translate	-1
Application Name	
Initial File Name	
Use Encryption for Data	0
Replication server name connect option	
Tag with column collation when possible	0

Below the table is a horizontal scrollbar. At the bottom of the dialog, there are three buttons: "Add Property ...", "Edit Value ..." (highlighted with a blue border), and "Remove Property". At the very bottom, there are five buttons: "< Back", "Next >", "Finish" (highlighted with a blue border), "Cancel", and "Help".

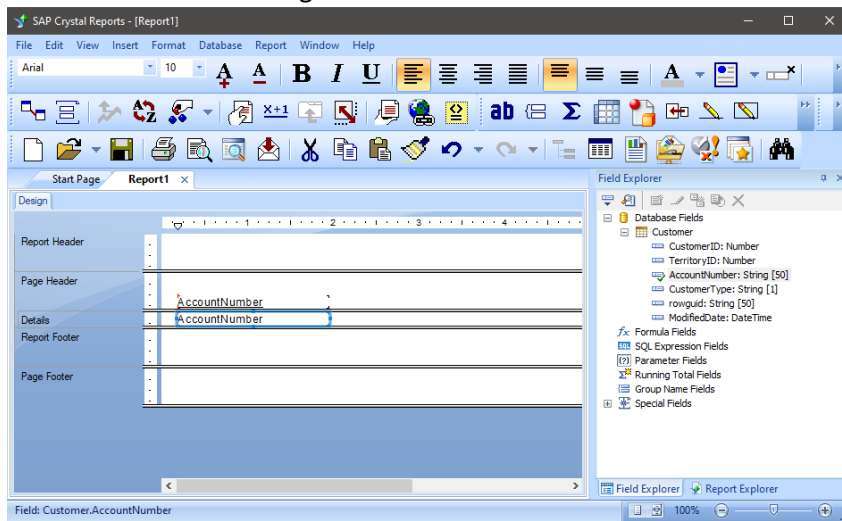
5 – Click the + to see the Tables.



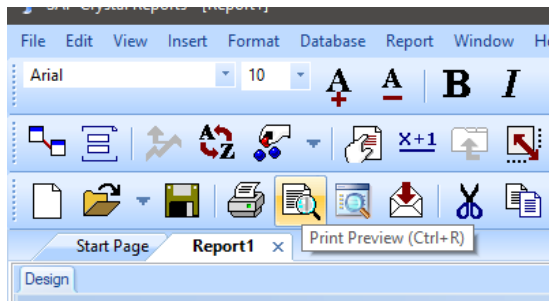
6 – Select a Table and then click the > to move it to the Selected Tables area. Click OK.



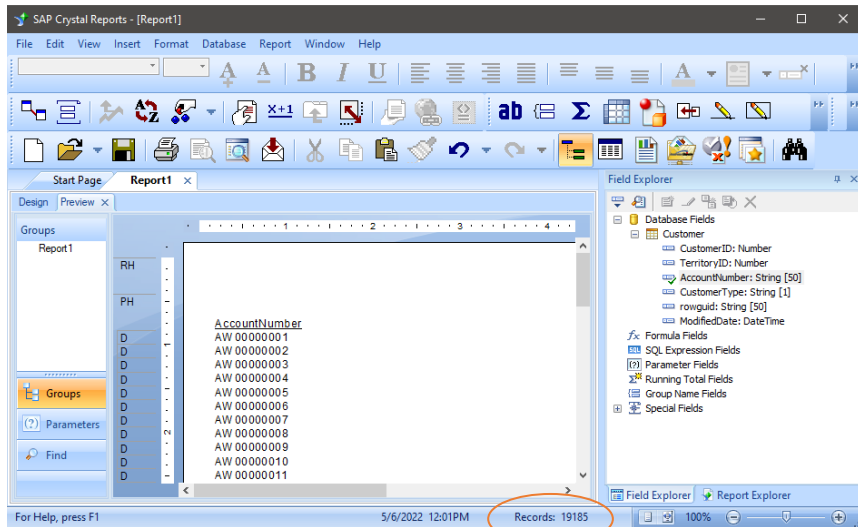
7 – Select a field and drag it to the Details area.



8 – Print Preview to test and see the results.



9 – Notice the record count at the bottom of the screen. 19185 records.



NOTE: Advanced course SQL statements do not use the ' if you connect to this database.